

# Instructions for wear checks of play equipment

The equipment must be checked for correct operation and safety, especially the points listed below:

Proof of maintenance

Playground.....

Date of installation .....

Checks depend on the type of equipment. Any equipment with moving parts must be checked at least twice a year, static equipment at least once a year.

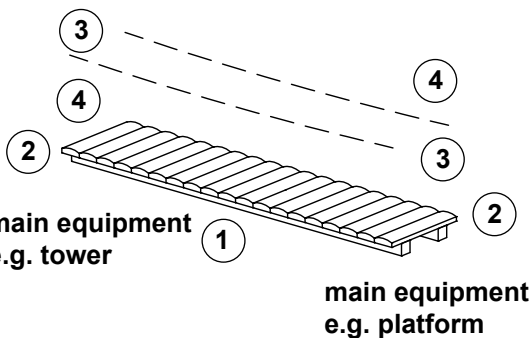
Intervals for maintenance work and checks generally depend on

- the location
- the usage
- the frequency of use
- possible vandalism

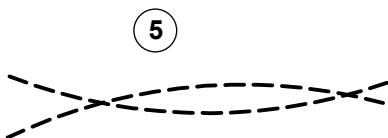
For more details see also "General instructions for maintenance of playgrounds".

**Bridge with chain handrail for attachment**

- Order No. 3.66420 length 2 m
- Order No. 3.66320 length 3 m
- Order No. 3.66330 length 4 m
- Order No. 3.66340 length 5 m



detailed diagram



## Wooden parts

1. Check for rot and, if necessary, smooth out splinters and round off sharp edges of cracks.
2. Check that bolts and screws on main equipment (e.g. platform) are tight and retighten if necessary.

## Chain handrail

3. Check connection of handrail chains to wood and retighten screws and bolts if necessary.
4. Check handrail chains and fixations of handrails: the first chain link of a chain must be locked; check wear on contact surfaces between first and second chain link.
5. **Attention!**  
The chain handrails must be tightened so that they **cannot** overlap to create a type of noose (see detailed diagram).






Special notes, e.g. for repairs

Repair not carried out, it is still possible to play on equipment

Repair not carried out, equipment is taken out of action

All work carried out, everything is in order

Maintenance carried out by:

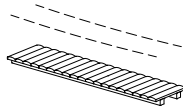
For spare parts refer to back of page.

..... Date .....

## Spare Parts

**Bridge** with chain handrail  
for attachment, 2/3/4/5 m

**Order No 3.66420/3.66320/3.66330/3.66340**

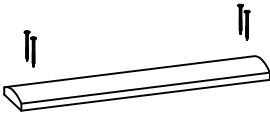


Please note that the safety standards of the equipment must not be affected. Therefore, when carrying out repairs it is helpful to **only use original parts.**

### Order No. Spare part

**0.30010** cladding, larch  
length 0.70 m  
width 14 - 18 cm  
depending on batch

Please indicate the covering surface.



**0.92500** handrail chain  
length 3.30 m



**0.92320** handrail joint

